

An underwater photograph of a coral reef. The scene is dominated by various types of coral, including large, rounded brain corals and smaller, branching species. The water is a deep, clear blue, and the lighting is somewhat dim, creating a serene and slightly mysterious atmosphere. The coral appears to be in good health, with vibrant colors like purple, pink, and white visible against the darker blue background.

# MODERN MARINE CONSERVATION IN PALAU, 1981-2005

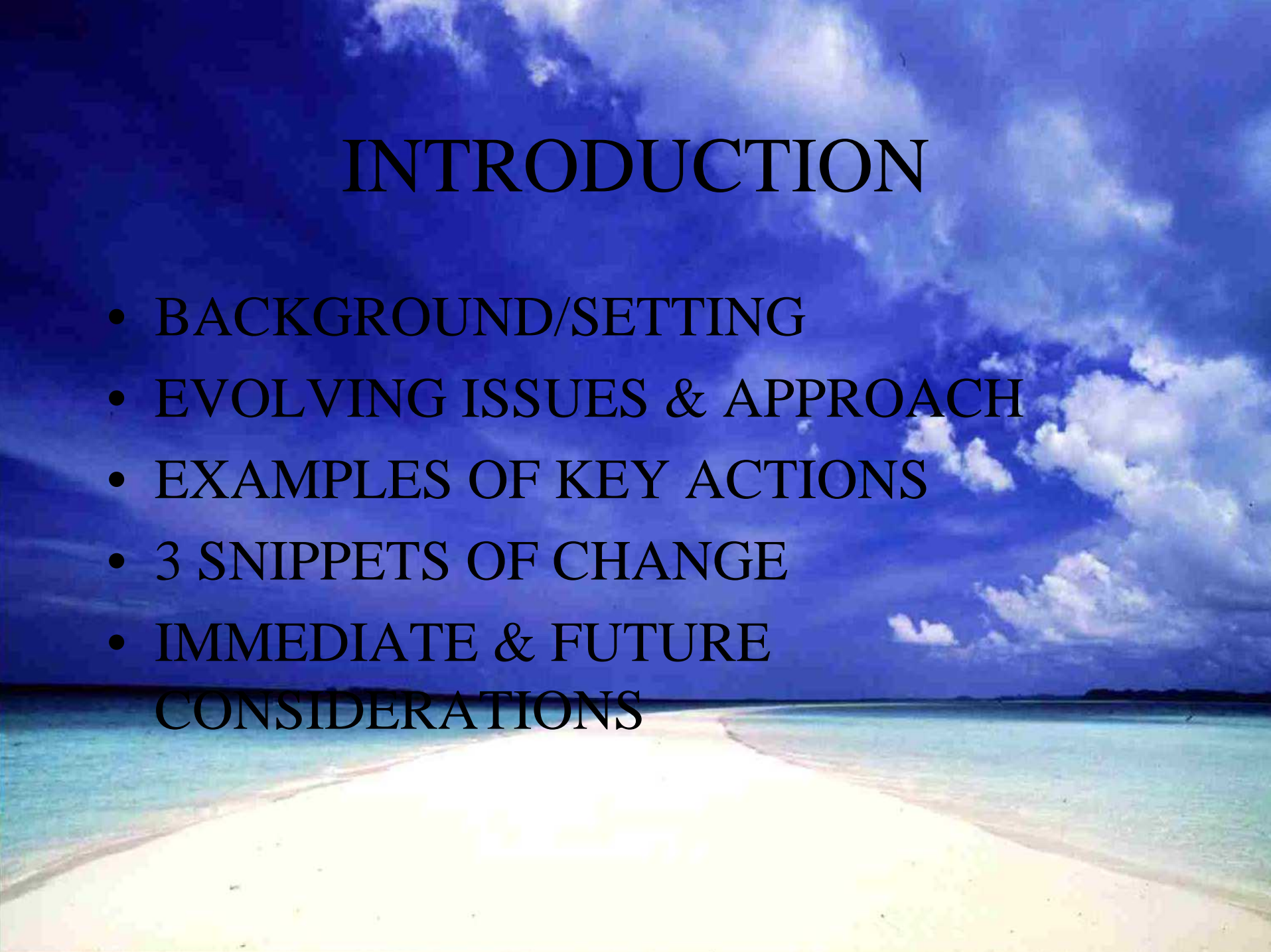
“LESSONS FROM  
20 YEARS OF EVOLUTION”

# ACKNOWLEDGEMENT

- US. GOVT, FOUNDATIONS & NGO'S  
DOI-OIA, FWS; DOC-NOAA, NMFS
- MACARTHUR;PACKARD
- TNC
- JAPAN GOVT.; JICA
- SPREP,SPC, FFA
- PEOPLE – ISLANDERS, FRIENDS

# INTRODUCTION

- BACKGROUND/SETTING
- EVOLVING ISSUES & APPROACH
- EXAMPLES OF KEY ACTIONS
- 3 SNIPPETS OF CHANGE
- IMMEDIATE & FUTURE CONSIDERATIONS



# CONSTITUTIONAL GOV'T., 1981



- **16 STATES**
- **RESOURCE OWNED BY STATES**
- **AUTHORITY CENTRALIZED, MAY ONLY BE DELAGATED**
- **RECOGNIZE TRADITIONAL LEADERSHIP, ADVISORY ROLE ONLY AT NATIONAL LEVEL**
- **MORE ROLE AT STATE LEVEL, BUT NOT EXCEEDING CONSTITUTIONAL MANDATE**
- **NEW RELATIONS WITH U.S. UNCLEAR**



# CHALLENGING TIMES

- **HIGH EXPECTATIONS, LACK OF FUNDS, DIVISIVE ISSUES, POLITICAL UNCERTAINTIES BRED MISTRUSTS AND POLARIZED PALAU & STRAINED RELATIONS WITH U.S..**
- **HARD TIMES FOLLOWED**
- **RESOURCE AGENCIES FACED TOUGH TIME IN PROGRAM DELIVERY**

# JAPAN GRANT AID, 1983

- FISHING BOATS, ICE PLANTS, FISHING GEARS,
- FISHING PORT DEVELOPMENTS AND PROGRAMS
- SPC TECHNICAL SUPPORT



# CONCERNS 1985

- **DYNAMITING & DESTRUCTIVE FISHING**
- **POACHING AND ENCROACHMENT**
- **OVERFISHING, FISH WASTE**
- **FOREIGN FISHERMEN – LIVE REEF FISH**

# SITUATION, 1985

- TECHNICAL EXPERTISE 0
- ENFORCEMENT 0
- FISHERIES MGMT LAW 0
- DATA 0 **OR SCATTERED**
- FUNDS MEAGER
- DIRECTION UNSURE



# SHIFT IN APPROACH



- **CONSULT WITH FISHERMEN & TRADITIONAL LEADERS**
- **DIRECT AND MAXIMIZE USE OF EXTERNAL EXPERTISE TO FILL GAPS IN LOCAL KNOWLEDGE**
- **FOCUS ON ENFORCEMENT, FISHERIES LAW, PROTECTED AREAS DEVELOPMENT**

# KEY ACTIONS



- **RE-ESTABLISH CONSERVATION DIVISION TO ENFORCE EXISTING LAWS, 1988**
- **SURVEY OF 70 IS. (UOGML,SPREP), 1988**
- **FISH CATCH DATA, SUBSISTENCE DATA (NMFS, 1988, SPC, 1989)**
- **FISHERMEN'S CONSULTATIONS (FFA), 1989**
- **MARINE RECONNAISSANCE FOR BABELDAOB (UOGML, EQPB) 1989**
- **DRAFTING OF FISHERIES LEGISLATION (TNC)**

# KEY ACTIONS, CONTD.

- **REA FOR PALAU'S MAIN ISLANDS AND SOUTHWEST ISLANDS(OIA, TNC, GREEN PEACE, PALAU) 1991-93**
- **MOORING BUOYS INITIATED AT KOROR DIVE SITES (PALAU, TNC, GREENPEACE), 1993**



# 1995 RESULTS

- NATIONAL ENFORCEMENT ESTABLISHED
- MAJOR FISHERIES LAW, RPPPL 4-18
- FIRST MODERN BUL APPLIED, NORTHERN CHANNELS
- PALAU CONSERVATION SOCIETY OPEN FOR BUSINESS
- KOROR BANS FISHING AT MAJOR DIVE SITES
- PALAU BECOME INDEPENDENT, UNDER COFA



# PCS PROGRAMS

- **PRIDE CAMPAIGN WITH RARE**
- **MOBILIZE COMMUNITIES TO ADVANCE BUL CONCEPT**
- **ADVOCATES CREATION OF CORAL REEF CENTER**
- **BUILD POLITICAL SUPPORT**

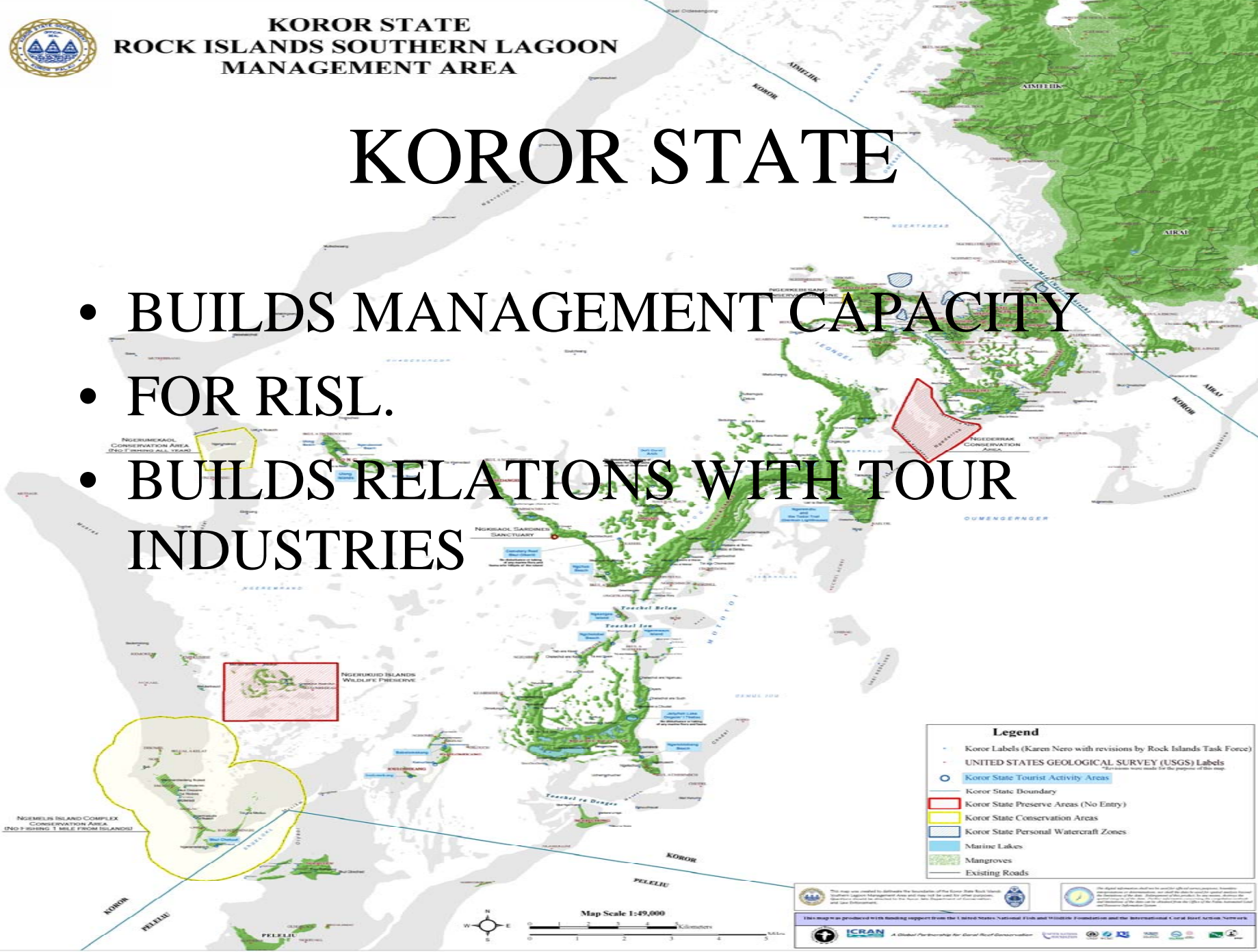
Palau Conservation  
Society



**KOROR STATE  
ROCK ISLANDS SOUTHERN LAGOON  
MANAGEMENT AREA**

# KOROR STATE

- BUILDS MANAGEMENT CAPACITY
- FOR RISL.
- BUILDS RELATIONS WITH TOUR INDUSTRIES

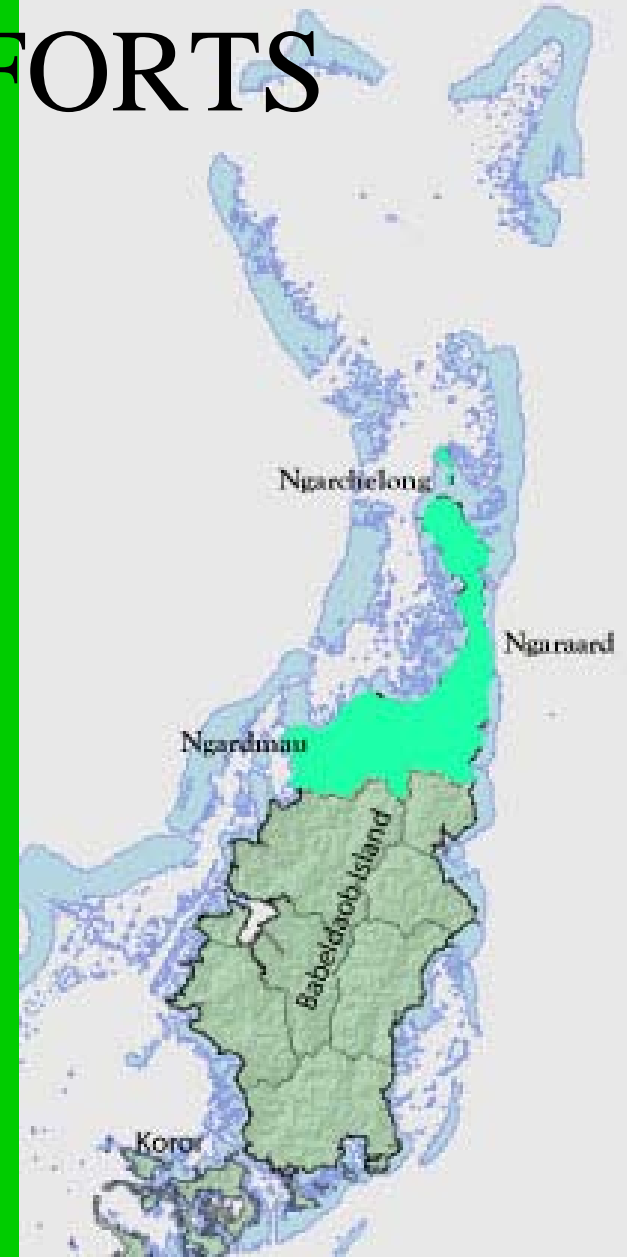


Legend	
	Koror Labels (Karen Nero with revisions by Rock Islands Task Force)
	UNITED STATES GEOLOGICAL SURVEY (USGS) Labels
	Koror State Tourist Activity Areas
	Koror State Boundary
	Koror State Preserve Areas (No Entry)
	Koror State Conservation Areas
	Koror State Personal Watercraft Zones
	Marine Lakes
	Mangroves
	Existing Roads



# COMMUNITY EFFORTS

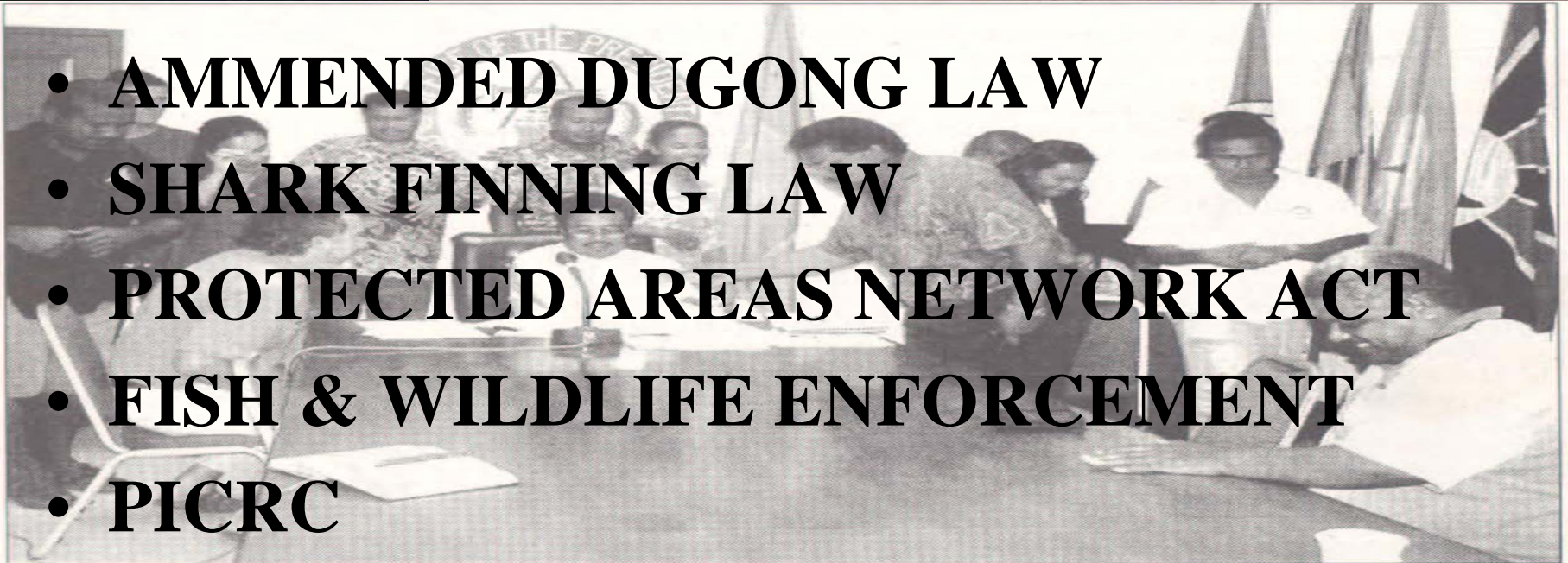
- KAYANGEL
- MELEKEOK
- HATOHOBELI
- NGARCHELONG



# 2005



- **AMMENDED DUGONG LAW**
- **SHARK FINNING LAW**
- **PROTECTED AREAS NETWORK ACT**
- **FISH & WILDLIFE ENFORCEMENT**
- **PICRC**



*President Remengesau is flanked by staff of the Bureau of Marine Resources, The Nature Conservancy, Palau Conservation Society, Koror State Rangers, PICRC, OERC and Ministry of Resources and Development following the signing into law of the Protected Areas Network measure.*

photo By Bernadette H. Carreon



# CONSIDERATIONS

- UPGRADING CAPACITY TO MATCH EXISTING POLITICAL WILL AND EXPECTATION
- PAN IMPLEMENTATION
- CONSERVATION BENEFITS TO LOCAL COMMUNITIES



**The House of Delegates  
6<sup>th</sup> Olbiil Era Kelulau  
(Palau National Congress)  
FINAL ACT**

**Protected Areas Network (PAN) Act, HB 6-76-10S**

**Offered By: Delegate Noah Idechong & others.**

**Date Introduced: May 17, 2002**

**Approved & Sent to Senate Oct. 31 2002**

# Kom Kmal Mesulang

